

Anti-Rat IgM (mu chain) (Alkaline Phosphatase Conjugated) Secondary Antibody
Goat Polyclonal, Alkaline Phosphatase (Calf Intestine)
Catalog # ASR3062**Specification****Anti-Rat IgM (mu chain) (Alkaline Phosphatase Conjugated) Secondary Antibody - Product Information**

Description	Anti-RAT IgM (mu chain) (GOAT) Antibody
Host	Alkaline Phosphatase Conjugated
Conjugate	Goat
Target Species	Alkaline Phosphatase (Calf Intestine)
Clonality	Rat
Application	Polyclonal
Application Note	WB, E, IC
	ELISA 1:2,000-1:10,000;Western Blot
	1:500-1:2,500;Immunochemistry
	1:200-1:1,000
Physical State	Liquid (sterile filtered)
Host Isotype	IgG
Target Isotype	IgM μ chain
Buffer	0.05 M Tris Chloride, 0.15M Sodium Chloride, 0.001M Magnesium Chloride, 0.0001M Zinc Chloride, 50% (v/v) Glycerol; pH 8.0
Immunogen	Rat IgM mu heavy chain
Stabilizer	10 mg/mL Bovine Serum Albumin (BSA) - Immunoglobulin and Protease free
Preservative	0.01% (w/v) Sodium Azide

Anti-Rat IgM (mu chain) (Alkaline Phosphatase Conjugated) Secondary Antibody - Additional Information**Shipping Condition**

Wet Ice

Purity

This product was prepared from monospecific antiserum by immunoaffinity chromatography using Rat IgM coupled to agarose beads followed by solid phase adsorption(s) to remove any unwanted reactivities. Assay by immunoelectrophoresis resulted in a single precipitin arc against anti-Alkaline Phosphatase (calf intestine), anti-Goat Serum, Rat IgM and Rat Serum. Specificity was confirmed by ELISA at less than 1% cross reactivity against other Rat or human heavy or light chain isotypes.

Storage Condition

Store vial at 4° C before opening. DO NOT FREEZE. This product is stable at 4° C as an undiluted liquid. Dilute only prior to immediate use. Freezing alkaline phosphatase conjugates will result in a substantial loss of enzymatic activity.

Precautions Note

This product is for research use only and is not intended for therapeutic or diagnostic applications.

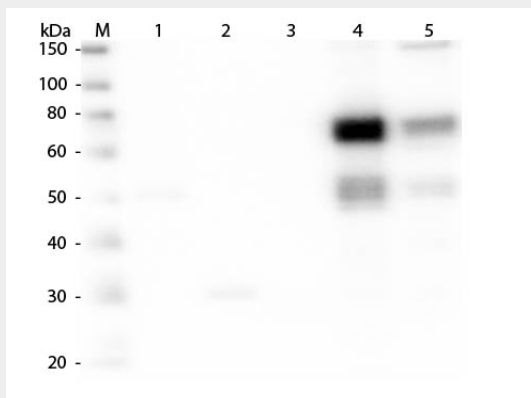
Anti-Rat IgM (mu chain) (Alkaline Phosphatase Conjugated) Secondary Antibody - Protein Information

Anti-Rat IgM (mu chain) (Alkaline Phosphatase Conjugated) Secondary Antibody - Protocols

Provided below are standard protocols that you may find useful for product applications.

- [Western Blot](#)
- [Blocking Peptides](#)
- [Dot Blot](#)
- [Immunohistochemistry](#)
- [Immunofluorescence](#)
- [Immunoprecipitation](#)
- [Flow Cytometry](#)
- [Cell Culture](#)

Anti-Rat IgM (mu chain) (Alkaline Phosphatase Conjugated) Secondary Antibody - Images



Western Blot of Anti-Rat IgM (mu chain) (GOAT) Antibody . Lane M: 3 μ l Molecular Ladder. Lane 1: Rat IgG whole molecule . Lane 2: Rat IgG F(c) Fragment . Lane 3: Rat IgG F(ab) Fragment . Lane 4: Rat IgM Whole Molecule . Lane 5: Rat Serum . All samples were reduced. Load: 50 ng per lane. Block: MB-070 for 30 min at RT. Primary Antibody: Anti-Rat IgM (mu chain) (GOAT) Antibody 1:1,000 for 60 min at RT. Secondary Antibody: Anti-Goat IgG (DONKEY) Peroxidase Conjugated Antibody 1:40,000 in MB-070 for 30 min at RT. Predicted/Observed Size: 25 and 55 kDa for Rat IgG and Serum, 25 kDa for F(c) and F(ab), 78 and 25 kDa for IgM. Rat F(c) migrates slightly higher.